

Rural Municipality of Loon Lake No. 561

BYLAW No. 4/2015

A BYLAW TO AMEND BYLAW 1/2013 KNOWN AS THE  
OFFICIAL COMMUNITY PLAN

The Council of the Rural Municipality of Loon Lake No. 561 in the Province of Saskatchewan, enacts to amend Bylaw No.1/2013 as follows:

1. The Future Land Use Map which forms part of the Official Community Plan Bylaw 1/2013 shall be amended as follows:

By redesignating from CON – Conservation & Recreation District to LD2 – Medium Density Lakeshore Development District, the property located in SW ¼ 15-59-22 W3, as shown within the bold outlined area on the attached hereto and forms a part of this bylaw.

2. This bylaw shall come into force and take effect when approved by the Minister.



  
\_\_\_\_\_  
REEVE

  
\_\_\_\_\_  
ADMINISTRATOR

Read a first time on 10 day of June, 2015  
Read a second time on 12 day of August, 2015  
Read a third time on 12 day of August, 2015

**CERTIFIED TRUE COPY  
FROM THE  
R.M. OF LOON LAKE #561**



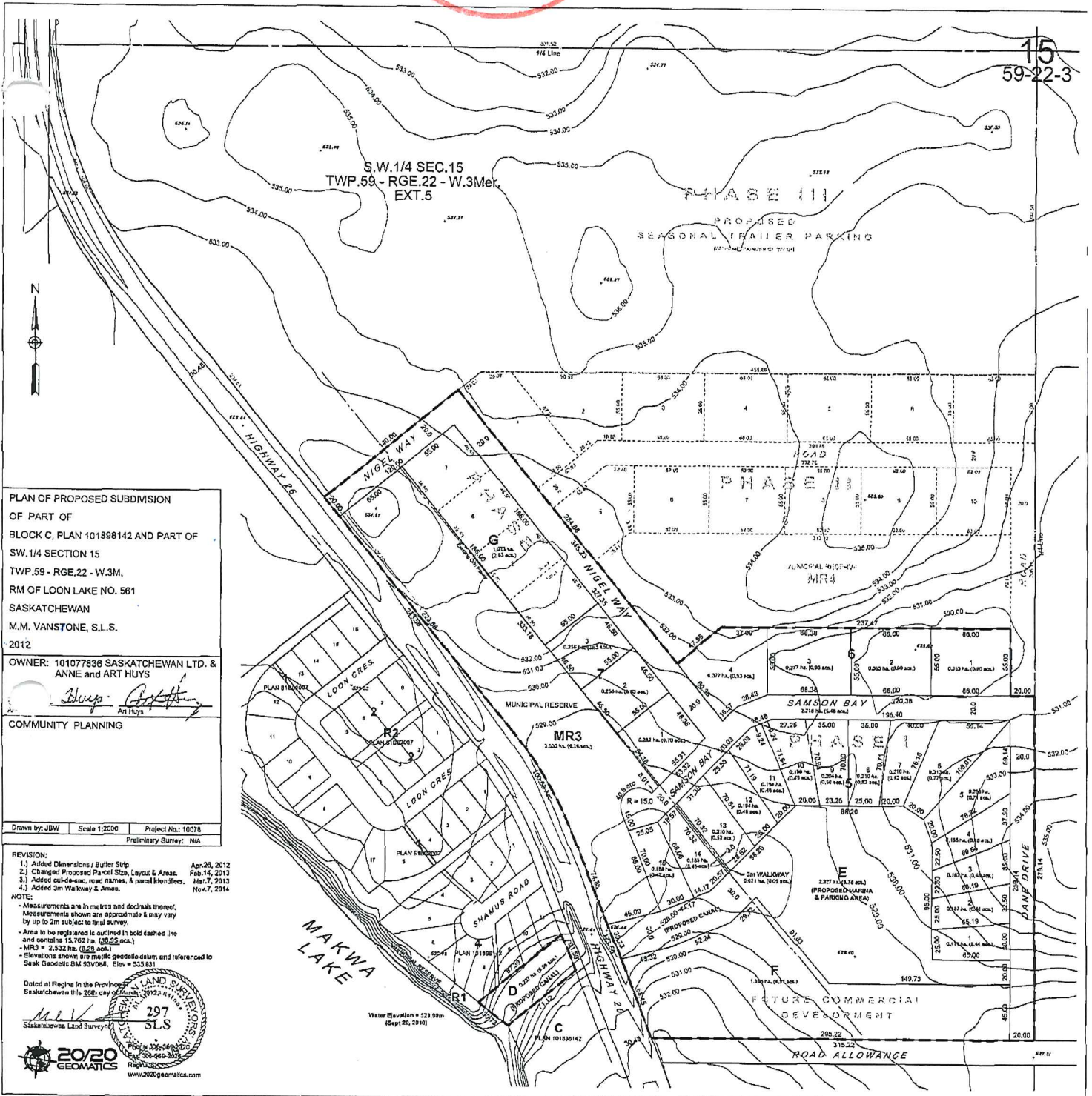


This map forms part of Bylaw 4/2015.



*Aurie Lehoux,*  
 Administrator

15  
 59-22-3



PLAN OF PROPOSED SUBDIVISION  
 OF PART OF  
 BLOCK C, PLAN 101898142 AND PART OF  
 SW. 1/4 SECTION 15  
 TWP. 59 - RGE. 22 - W. 3M.  
 RM OF LOON LAKE NO. 561  
 SASKATCHEWAN  
 M.M. VANSTONE, S.L.S.  
 2012

OWNER: 101077836 SASKATCHEWAN LTD. &  
 ANNE and ART HUYS

*Blair An Hays*  
 An Hays

COMMUNITY PLANNING

Drawn by: JBW Scale 1:2000 Project No.: 10076  
 Preliminary Survey: N/A

REVISION:  
 1.) Added Dimensions / Buffer Size Apr. 26, 2012  
 2.) Changed Proposed Parcel Size, Layout & Areas. Feb. 14, 2013  
 3.) Added out-of-area, road names, & parcel identifiers. Mar. 7, 2013  
 4.) Added 3m Walkway & Areas. Nov. 7, 2014

NOTE:  
 - Measurements are in metres and decimals thereof.  
 - Measurements shown are approximate & may vary by up to 2m subject to final survey.  
 - Area to be registered is outlined in bold dashed line and contains 15,762 ha. (38.95 aca.)  
 - MR3 = 2,552 ha. (62.96 aca.)  
 - Elevations shown are from geodetic datum and referenced to Sask. Geodetic BM 03V088. Elev = 533.831

Dated at Regina in the Province of Saskatchewan this 29th day of April 2012.

*M.M. Vanstone*  
 Saskatchewan Land Surveyor

297  
 SLS

2020  
 GEOMATICS  
 www.2020geomatics.com